

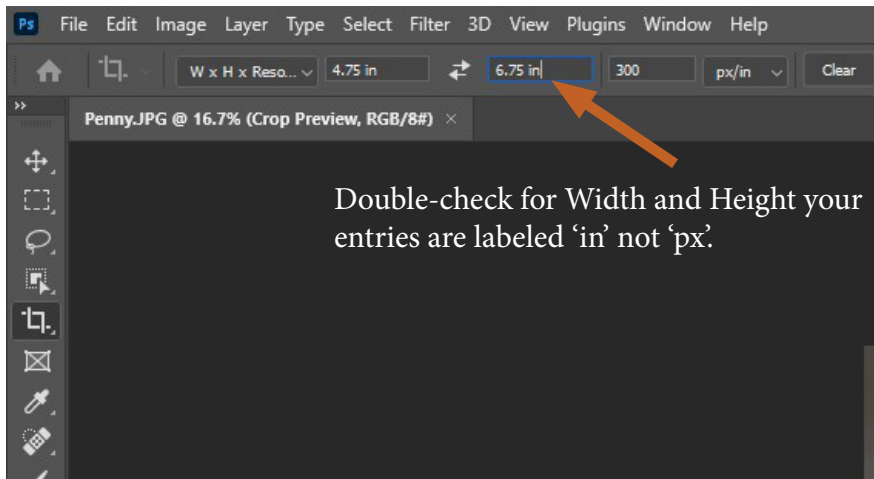
Using Moab Artist Card Templates for Adobe Photoshop CC in Windows

(The following instructions are based on the 7x10 cards, which have a front panel size of 5x7)

First, open the card template and the image you'd like to print. Crop your image to the desired print size. On the 7x10 cards, the maximum image size is 4.75 x 6.75 inches.

Open the image in Photoshop.

Select the Crop tool, and in the tool settings select width x height x resolution. Enter 4.75 for the width, 6.75 for the height, and 300 for the resolution. Crop your image as desired.



For most printers, borderless printing is not possible with Artist Cards. Some Epson and Canon printers support borderless printing on custom paper sizes, more information is available on our web site.

Next, copy your image on to the print template.

From the Select menu, choose All

From the Edit menu, choose Copy

Go to the Moab card print template

From the Edit menu, choose Paste

Select the Move Tool, and drag your image so it covers the shaded rectangle on the template.

Hide the instruction layer, and add text on the back panel (if desired).

Select File>Print

Photoshop Print Settings window will launch.

In the Printer Setup section, make sure your correct printer is selected.

In the Color Management section make the following selections:

Color Handling>select Photoshop Manages Colors

Printer Profile>select the appropriate color profile

Click the "Print Settings" button (located back at the top)

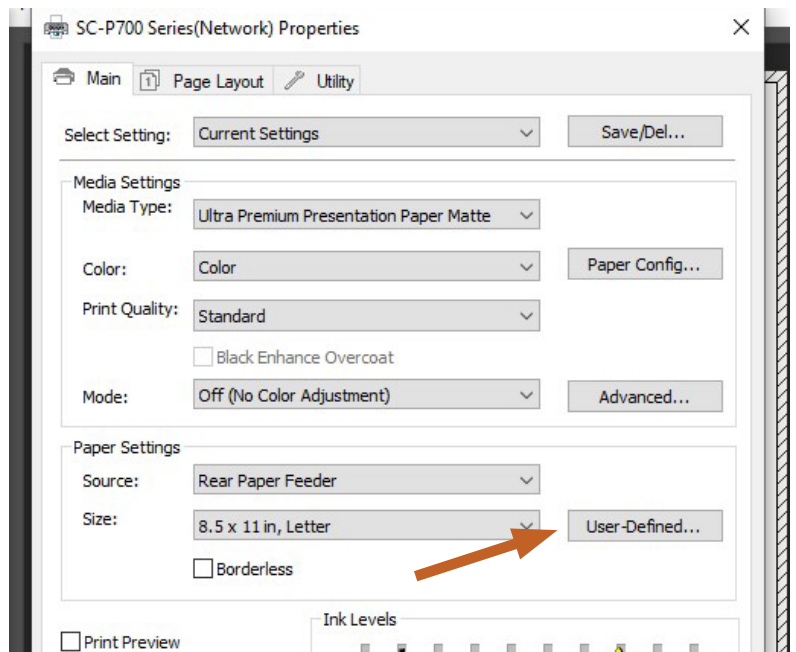
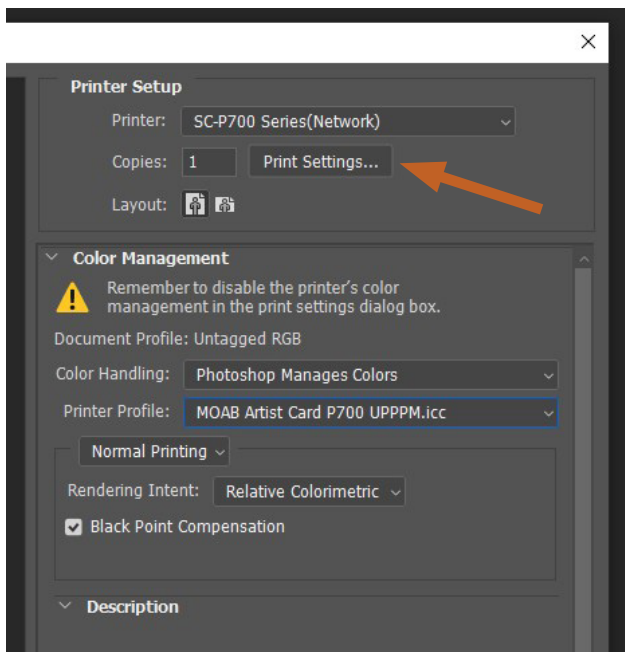
If this is your first time printing Artist Cards, you will need to make a custom paper size.

For Epson printer instructions, start here.

For Canon printer instructions, go to page 3.

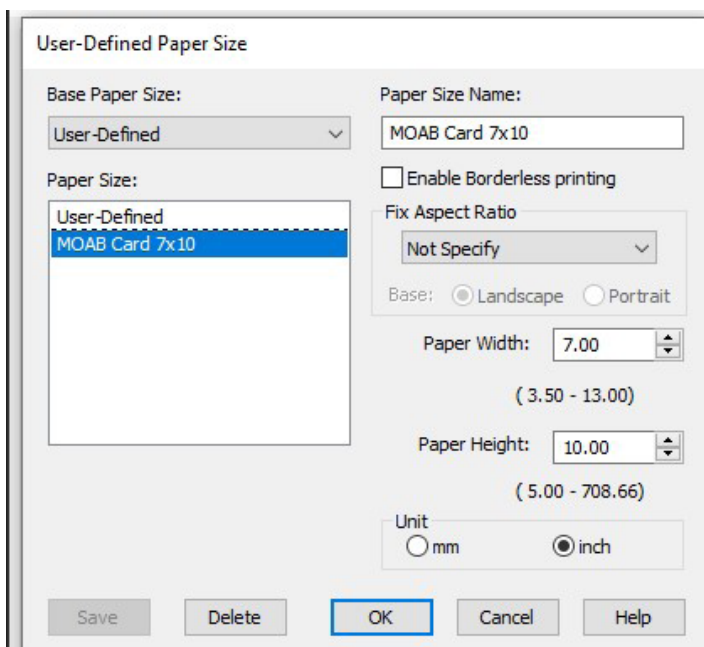
Epson Printer Instructions

Create a custom paper size for Epson printers. In the Print Settings window, click on the 'User Defined' button in the 'Paper Settings' section.



In the 'User Defined Paper Size' window, enter your desired 'Paper Size Name'.

Enter the Width and Height for the card you are printing. The width measurement will always be the shorter side of the paper. Card sizes are:



Paper Size (use this for custom paper size)

- Artist Card #6 Small 5.8w x 9h inches
- Artist Card #9 Large 7.4w x 11h inches
- Artist Card Square 5.25w x 10.5h inches
- Moab Entradalopes 7w x 10h inches

Click Save OK to save your custom setting and then click OK to select it for printing.

In Print Settings you will also need to select the media setting & print quality

For all Epson printers, the media setting for Artist Cards is Ultra Premium Presentation Paper Matte. All media settings are located here: www.moabpaper.com/icc-profiles-downloads

*The Fine Art-front (Epson) paper feed can NOT be used when printing cards.

Click OK to save your print settings.

Canon Printer Instructions

Create a custom paper size for Canon printers. In the Print Settings window, click on the 'Printer Paper Size' drop-down menu, scroll to the bottom and select 'Custom...'

Enter the Width and Height for the card you are printing. The width measurement will always be the shorter side of the paper. Card sizes are:

Paper Size (use this for custom paper size)

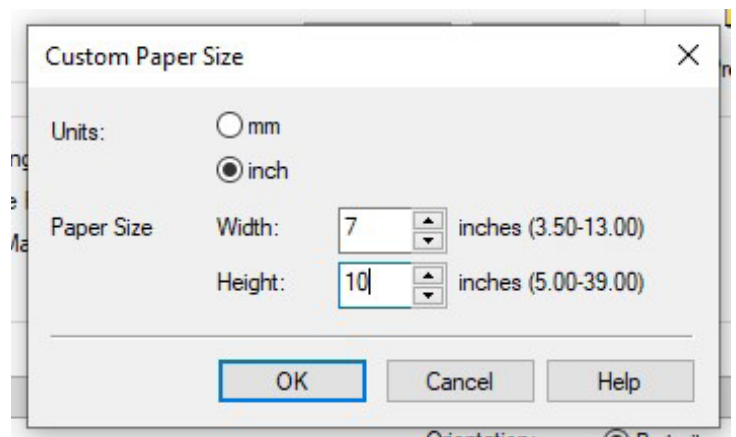
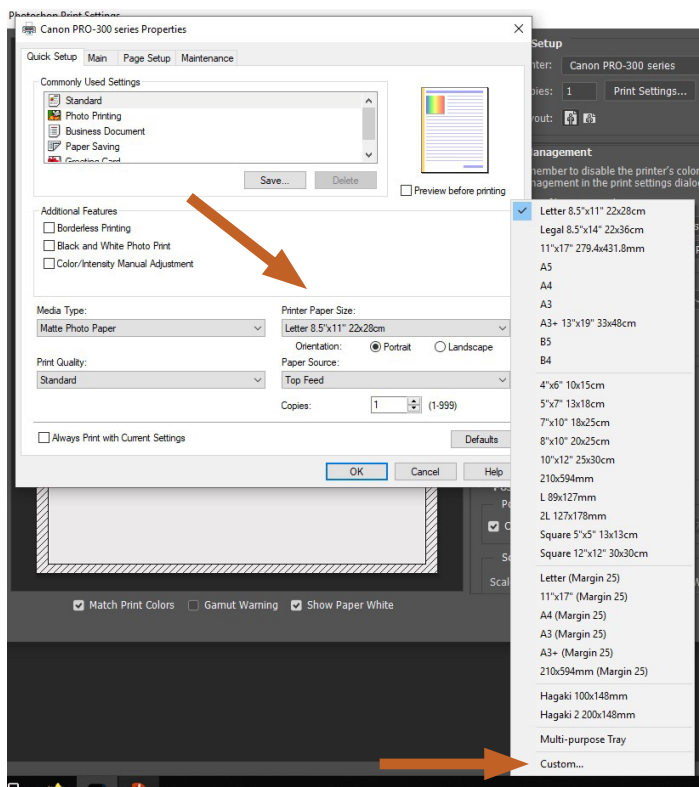
Artist Card #6 Small 5.8w x 9h inches

Artist Card #9 Large 7.4w x 11h inches

Artist Card Square 5.25w x 10.5h inches

Moab Entradalopes 7w x 10h inches

Click Save OK to save your custom setting.



* If you are using the Canon PRO-200 or PRO-300 printers, there is a 7x10 media setting in the print driver which allows for borderless printing. For the other card sizes you will need to make a custom paper size as described here.

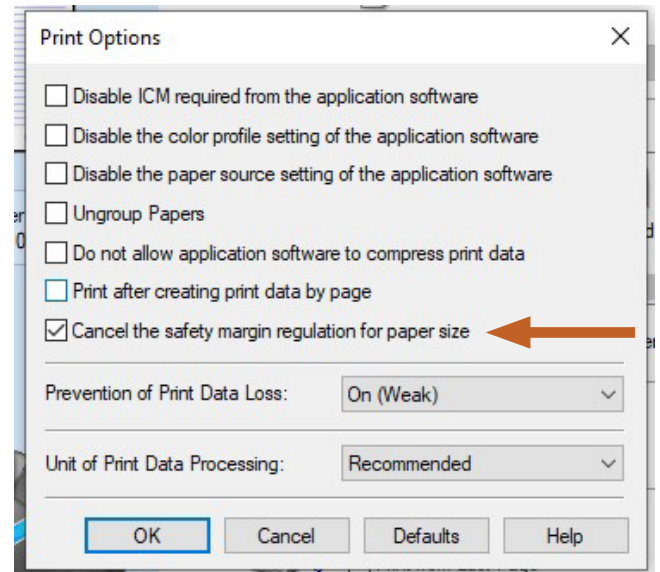
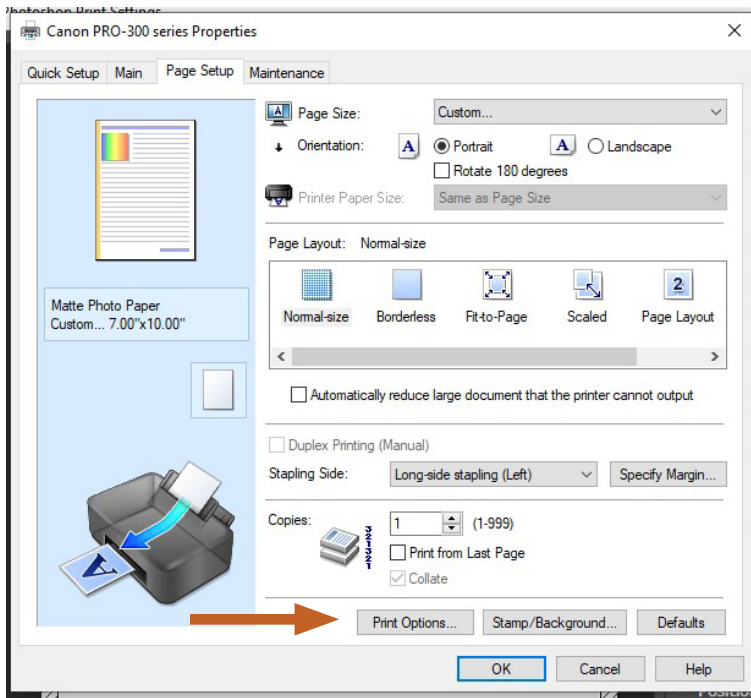
In Print Settings you will also need to select the media setting & print quality. For all Canon printers, the media setting for Artist Cards is Matte Photo Paper. All media settings are located here: www.moabpaper.com/icc-profiles-downloads

Next, click on the 'Page Setup' tab and then on the 'Print Options' button.

Check the box for 'Cancel the safety margin regulation for paper size' and click OK in the warning window that pops up.

Click OK in the print options window to save your selection, then click OK again to return to the Photoshop print window.

*The manual-rear (Canon) paper feed can NOT be used when printing cards.



Returning to the Photoshop Print Settings window, double-check the preview window, and if the sample looks good click Print.

If you want to print text on the inside of the card, use the same setup and margins as you did when printing the front image.

When loading paper for printing the second side:

Load the sheet in the printer image first, printed side down.

